

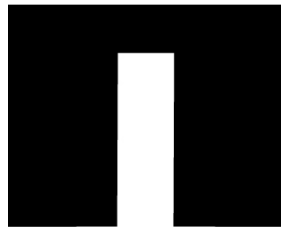
Contribute to Big Jelly

Student guidelines for evaluated contributions to the Big Jelly Publication.



Big Jelly

Jul 29, 2015 · 6 min read



Instead of the standard research essay, students will be required to write for the interdisciplinary, undergraduate publication on technoculture. The frequency of contribution and type of contribution will be left up to the students. Here's how it will

work.

The writing requirement for this course is equivalent to **200 points**. You have the opportunity to earn all of this points by submitting various forms of writing. You earn these points by contributing content that is accepted for publication to *Big Jelly*. Only contributions that are accepted will earn you points; more on the editorial process in a moment.

Big Jelly

The name "Big Jelly" is taken from a story by Bruce Sterling and Rudy Rucker about big ideas brought about by...

bigjelly.net

Types of Contributions

The following types of published contributions will earn you different points. The maximum number of points for the semester will be **200**. Therefore, if you wish to earn the maximum points, plan your contributions accordingly. For example, if you *publish* an article and a review, you have earned 150 points; you could then publish another review or a note and a response to pick up the last 50. Here's a breakdown of each type of contribution.

Essay (200 Points)

An essay is the electronic equivalent of a **major research paper** that uses multiple sources, critically examines one or more of the course's major texts, develops a focused thesis through well organized and argued body paragraphs, and likely uses a specific mode of inquiry, like feminism, psychoanalysis, or new criticism. Essays should range between 2500–3000 words. Since this type of contribution is the most time-consuming and difficult to publish, it earns you the most points.

Article (100 points)

Consider an article as an intertextual and/or interdisciplinary research essay. It will range in length from 1200–2000 words and include reliable sources. An article should critically and thoughtfully engage an idea from the course texts (books, articles, documentaries, etc.) and lecture materials into a well argued, logically synthesized, and well-supported essay.

Review (50 points)

A review will do just that: break down a text (book, article, documentary, etc.) into its main points and explain or comment on one or more. Part of this explanation is how they fit into the overall discussion, how well the text presents them, and the overall effectiveness of the argument. For example, a review of Isaac Asimov's short story "Reason" might discuss how human reason acts within the story and how it's significant to our study of science fiction. Reviews are not about whether you like a text or not. It should be a review of the important content of the text and the issues it raises. Reviews will run about 750–1000 words.

Note (30 points)

A note will take a closer look at an idea, like a vocabulary term, a concept, a trend, a personality, etc. Consider this a little insight into something, or maybe a unique way that two concepts relate to one another. Notes might be like super responses, or they could take a critical term or concept from your reading and explain it. Notes should range between 500–750 words.

Response (20 points)

Responses use Medium’s response feature to comment on, challenge, or expand upon another post. They usually range between 200–400 words and do not have to be officially approved through the editorial process.

Comment (5 points)

Smart, thoughtful, and critical commentary is part of the success of any online publication. Strong, considerate comments—those that question, challenge, or nuance an article, review, note, or response in a respectful way—will be the ones that earn the points. Comments use Medium’s comment feature and must be made public by the author for them to count. Comments are limited to 200 characters. The maximum points earned on comments will be limited to 40.

Editorial Process

No contributions will be accepted unless they reflect the best writing practices. The content must be solid; the style must be elegant and succinct; the grammar and mechanics must be nearly perfect. If your contribution is rejected, you may revise and resubmit up to two more times before it is ultimately rejected. Here is the feedback that contributions could have.

Only accepted contributions earn points. In other words: contributions must be published in the Big Jelly pub to receive points.

Accepted

The contribution is accepted and will be published as submitted. These contributions might have minor editorial corrections before being published. The first submission of contributions usually will not be accepted and will require revision.

Accepted with Revision

This contribution will need some aspects revised, but they should be relatively minor. Revision will usually entail stylistic and mechanical issues, not content. Once the revisions are made, the contribution will be published.

Rejected

This contribution has problems with content: a problematic argument, lack of support, inappropriate subject matter, or similar issue. Usually, major revisions are necessary or a complete rewrite is needed. Once rewritten, the contribution can be resubmitted for consideration.

Final Rejection

The contribution ultimately does not meet the editorial standards and will not be published, even with substantial revision.

. . .

All submissions should use standard conventions for writing about art and culture. For a refresher, please see:

Humanities Basics

A primer for college students in the liberal arts and those taking a course from @drgrlucas.

medium.com

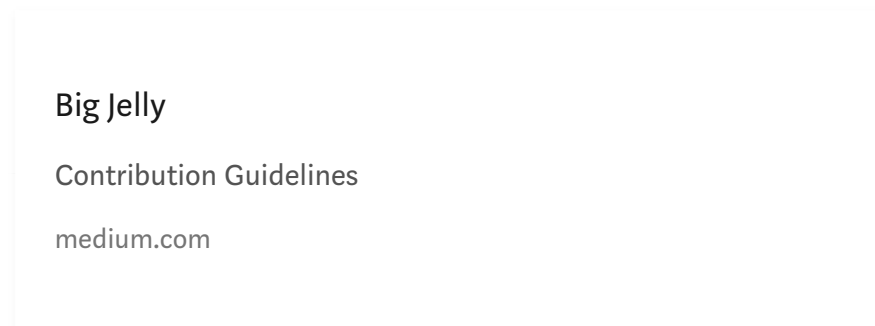
Directions

During the first week of class, make an account on Medium (this web site), add a photo and brief bio. Get your name added as a writer to *Big Jelly*. Write your contribution, then submit it to the publication. Repeat until you earn your 200 points.

To become a writer on *Big Jelly*, see me during my office hours (slow), or tweet me your Medium user name and ask me to add you (quick). Once I add you, you'll be able to submit your contributions to the publication. We might have time to do this in class during the first week of the semester.

Writing

Writing for the screen is not the same as writing for paper. The screen gives much more flexibility than paper, so the conventions are a bit different. See:



Pay particular attention to the sections labeled “Contributors” and “Writing.” Please follow these guidelines when creating your contributions; use:

- **writing strategies for the screen;**
- a **one-sentence abstract** under your title that summarizes and explains what your post is about (look to the top of this page for an example);
- **high-quality multimodal elements**, like a large image at the top

and perhaps other embedded content as support and illustration;

digital citation style, not MLA (we're not writing on paper);

direct links rather than a “works cited” section (again, this is not paper);

the **Editor's Checklist** to proofread for common mistakes;

the **Hemingway App** or the **Grammarly plugin** for style assistance.

Finally, when composing your contributions, aim for a **general audience**. Again, this is not a class paper that only you and the professor will read. You are posting in a public venue, so supply necessary context for your posts. In other words, target a general readership and supply all the details necessary for understanding your post.

Submission

Revise and proofread. Revise and proofread. Revise and proofread. Get a couple of classmates you trust and form a weekly writing club. Pass around your entries to workshop and improve them. Let your colleagues read your post as a draft. Revise and proofread. Revise and proofread. Revise and proofread. Revise and proofread. Revise and proofread.

Submissions containing more than a couple of typos or awkward sentences will automatically be rejected.

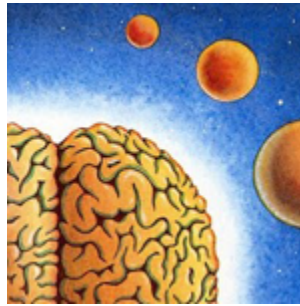
Once you are sure your entry is as perfect as you can make it, then submit your post as a **draft** to *Big Jelly* under the round ... menu on the top, right. Note: only contributions submitted correctly to *Big Jelly* will be considered for publication. Please do not email contributions to me.

Procrastinators, please note: I will only look at **five submissions per day**. This means that as the deadline approaches and everyone decides

to do their assignments, you might not make it. I strongly recommend that you **begin this process early**, so that you have plenty of time to submit as revise as needed. Also, I will not publish more than a single submission by anyone at one time. This means that one person cannot have two contributions in a row.

In other words, start this process early and write consistently throughout the semester.

Procrastination will really hurt you here.



. . .

This assignment is for Dr. Lucas' HUMN 4472, Fall 2015 course.